

358 Mesh Fencing Specification Sheet



358 Mesh Fencing

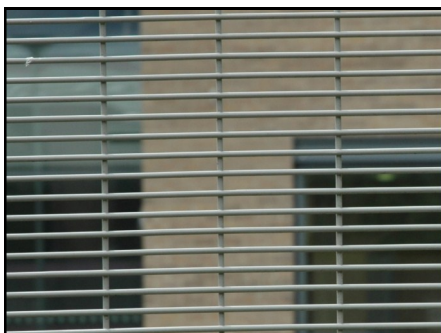
358 Mesh Fencing is High Security boundary fence. It is specifically manufactured to ensure High Security and prevent would be intruders cutting through or climbing over.

358 Mesh Fencing is ideally used in the following applications:

- Prisons
- Airports
- Railways Depots
- High Security Areas

Advantages of 358 Mesh Security Fencing are:

- Maintenance Free
- Anti Climb
- Available in many heights
- Galvanised to British Standard EN ISO 1461 or a colour of your choice



Specification

Posts - 60mm x 60mm or 80mm x 80mm depending on height of the fence. Posts installed at 2.515m centres.

Panel Specification - 4mm wires resistance welded into 76.2mm (3") x 12.7mm (1/2") rectangles making a solid steel mesh panel.

Heights - Standard heights are 1.27m (50"), 1.828m (72"), 2.134m (84"), 2.440m (96"), 2.7m (106 1/2"), 3m (118"), 4.2m (165 1/2"), 5.2m (205")

Fixings - The 358 Mesh panels are connected to the posts using a clamp strip and anti tamper 8mm bolts and permacone security nuts.

Finish - Galvanised to B.S EN ISO 1461 as standard. There is also an option for the fence to be Polyester Powder Coated to a colour of your choice.

Extras - Razor Wire, Barbed Wire or anti-vandal tops can be added to the top of a 358 Mesh fence to increase security.

Gates - Single Leaf, Double Leaf and Sliding Gates are all available made to measure.

Contact Details

Collinson Contracts Ltd

Stannetts, Laindon, Essex, SS15 6DN

T - 01268 411671

E - sales@collinsonfencing.com

W - www.collinsonfencing.com